



CONTACT

Department of Earth Resources Engineering,

University of Moratuwa,

Katubedda, Sri Lanka.

T: 011-2560301 | Ext: 5000

E: head-earth@uom.lk

W: www.uom.lk/ere



MINING & SURVEYING LABORATORY SERVICES



Department of Earth Resources Engineering

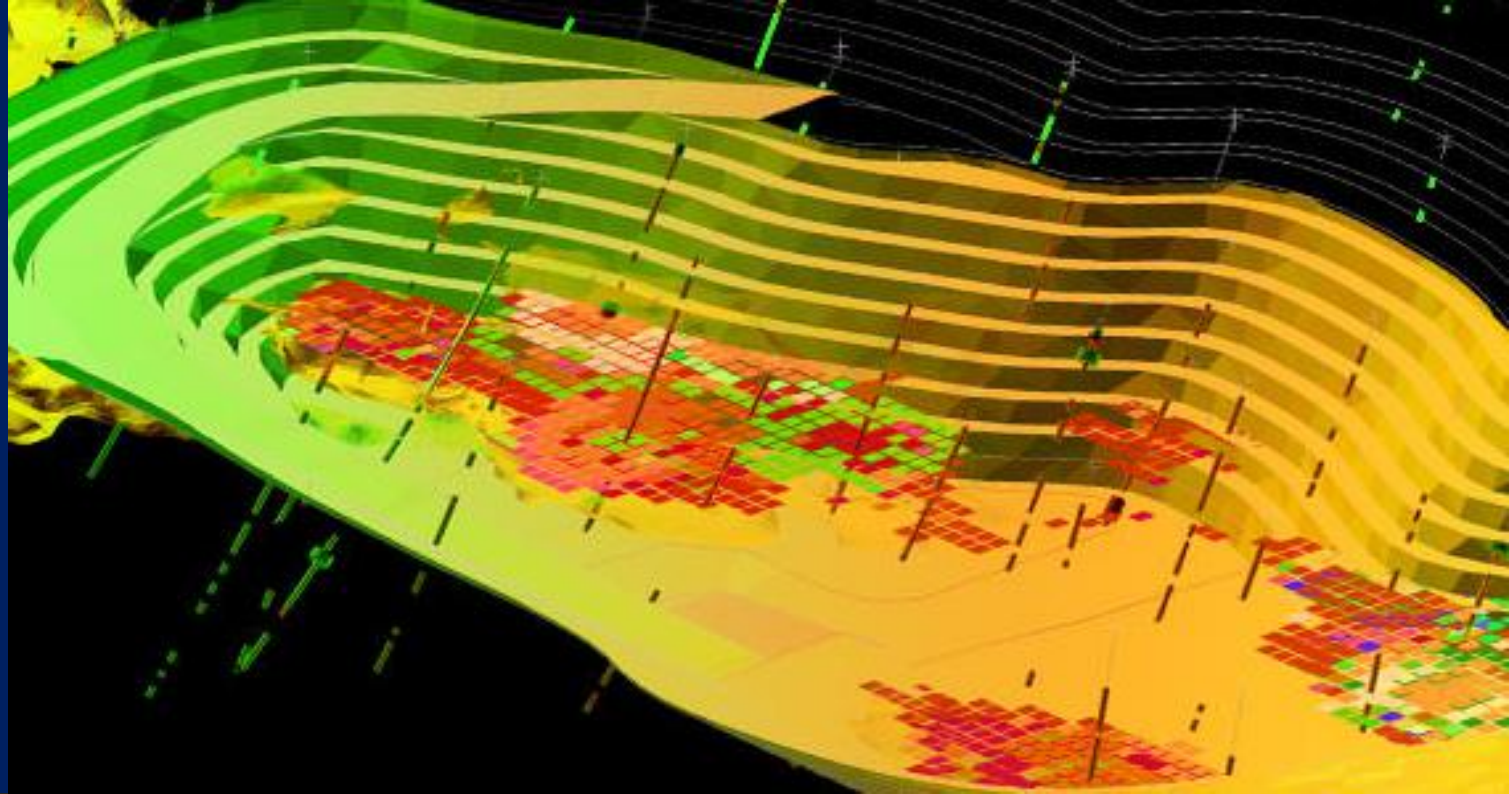
University of Moratuwa



FIELD SURVEYS & MONITORING

- Blast Monitoring¹
- Mine Survey² – Surface & Underground
- Drone Survey

¹Instantel Micromate | ²Leica TS06



SOFTWARE ANALYSIS & DESIGN

- Ore Resources Modelling
- Mine Modelling
- Mine Planning & Design
- Blast Design & Simulation
- Mine Haulage & Hoisting Design
- Mine Reclamation

SOFTWARE PACKAGES

- MineMap IMS*
- Maptek VulCan*
- JKSimBlast*

**Available only for research collaborative work.*