



- ▶ **Consulting Services**
- ▶ **Testing Services**
- ▶ **Research Services**

The Department of Earth Resources Engineering has a handful of engineering testing Laboratories. In particular, Analytical Laboratory plays a major role for analytical testing methods, chemistry and environmental testing analysis and water quality monitoring.

Analytical Capacity of the Department heightened by the Inductively Coupled Plasma Mass Spectrometer and UV-Visible Spectrophotometer for further development of mineral processing and value addition related projects.

Well Organized Report

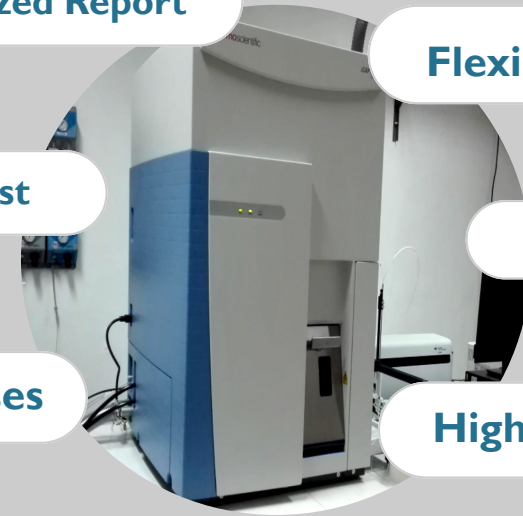
Flexibility

Best Analyst

Safety

Quick Responses

High Quality



## ICP-MS

Inductively Coupled Plasma Mass Spectrometer has an ability to detect metals and several non metals in liquid samples at concentration levels in parts per trillion level. ICP-MS is used for manipulating all the way to soil and water analysis in environmental field.

# OUR SERVICES

SERVICES	PARAMETERS
<b>Water Analysis</b>	Water Quality Parameters (pH, Temperature, Electrical conductivity, Turbidity, Water Hardness and COD) All metal and non metal ions
<b>Soil Analysis</b>	Physical analysis Chemical Analysis
<b>Quantitative Analysis of Analytes</b>	Quantitative analysis of metal and non metal ions (Nitrate, Fluoride, Phosphate, Iron, Calcium and Magnesium)



## CONTACT US

Department of Earth Resources Engineering,  
University of Moratuwa,  
Katubedda, Sri Lanka.

011-2650301 Ext - 5000

[head-earth@uom.lk](mailto:head-earth@uom.lk)

<https://uom.lk/ere>

